



we keep you ahead




consulting

Project Support.

Do your project! We'll support you in successfully completing it.

MBtech

Mercedes-Benz technology 



Lead
Repo

Change is the only constant: Stay on the ball!

Why project management determines your future.

The economy is constantly in flux – and no sector more so than the automotive industry. Market saturation creates stiffer competition and squeeze-out conditions, and customers are demanding higher standards for solutions that are both eco-friendly and reasonably priced. Companies are hard at work tapping into new markets, even as they have to align production capacity to meet those markets' needs. But how do you manage the complex interdisciplinary processes this involves? Only solid mastery of efficient, well-structured project management gives you the chance to utilize resources effectively for optimum time and cost management. This way, even limited budgets can accomplish a lot.

Why MBtech consulting is your best choice for the future.

As an engineering and consulting firm, MBtech is right at home in one of the world's most complex sectors – the automotive industry. Our background not only helps us in this industry, but also in assessing other economic sectors based on technology. We are able to apply our experience in project management across the board. You have the choice of deciding how we support you in managing your projects and programs.



You can count on our expertise:

- Automotive and technological background helps manage complex processes
- Our solid project management expertise can handle any project, no matter how large
- Certified project managers
- Proven methods, skillfully applied
- Wide range of experience at all stages of the value chain in the product creation process

Cooperation
 Partnership
 Control
 Management
 Coordination
 Planning
 Consistency
 Organization

Our program management: practical experience beats mere theory every time.

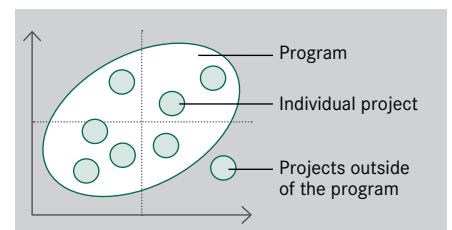
Keeping track of a complex system.

Projects seldom exist in a vacuum. Usually, they come in an interdependent cluster, linked together both in their content and strategically – so they have to be coordinated as a group. In the automotive industry and other technology-driven sectors, we call this kind of cluster a program. Management and alignment within a program is a big challenge for everyone involved, no matter what the industry. MBtech meets these challenges with its operational multi-project management approach.

This approach ensures transparency across the entire project landscape and makes sure the projects are presented clearly.

This has a lot of advantages:

- /// Better coordination of timelines, content, and staff
- /// Inter-project scheduling and progress monitoring
- /// Better argumentation and greater power to convince internal and external clients



Our Success Story

The project management office for a sports car.

Initial situation and assignment:

- /// A vehicle manufacturer and tuner has a finished product concept
- /// We need to prepare for implementation and monitor the project through to successful completion

Steps:

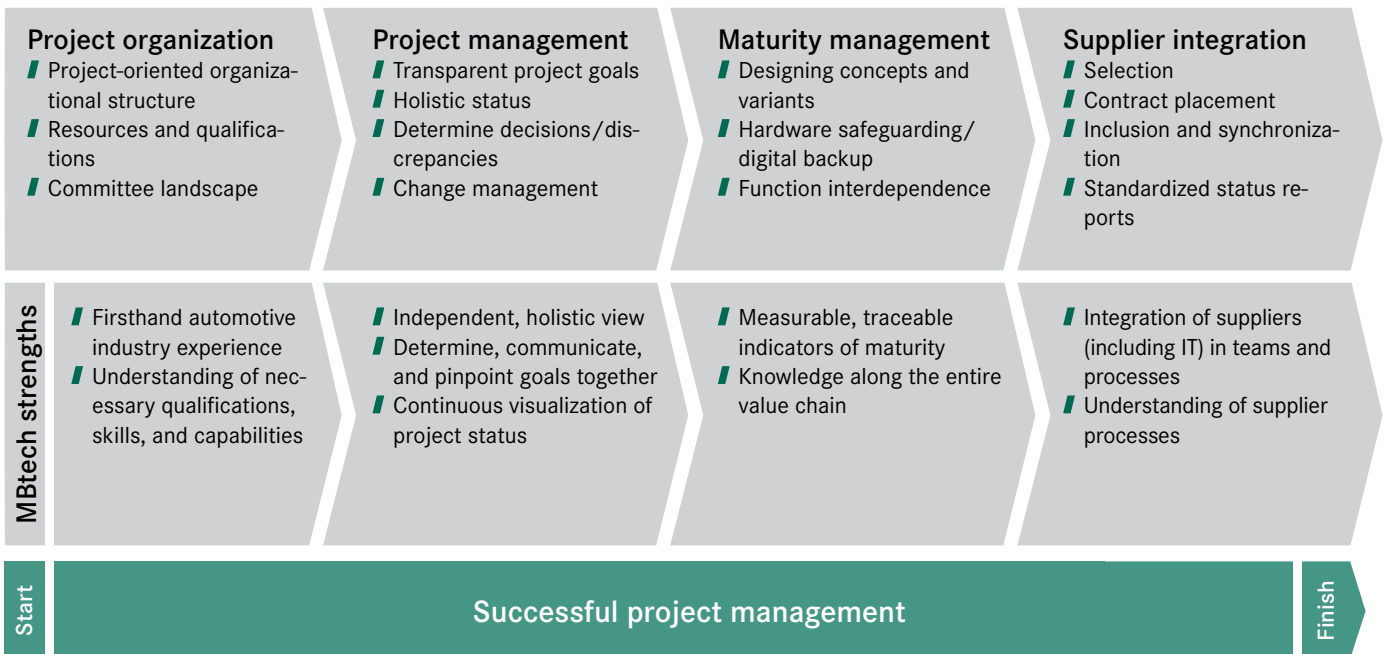
- /// Establish the project organization, including leadership
- /// Install the project management office
- /// Define the necessary processes
- /// Create a schedule and budget
- /// Establish the entire committee landscape

Results:

- /// Successful completion of the project after three years' management
- /// 3000 days of project management led to the desired objective
- /// All processes can be defined, taking into account various OEMs



Our strengths become your strengths,
and we share in your success.



MBtech works with you – either in a supporting or management capacity – to shape the success factors for your project management.

You can turn to MBtech for a range of different tasks:



Overall responsibility for planning and managing individual projects in the program



Solving coordination problems and priority conflicts within the program



Planning and managing all business and staffing resources



Managing interdisciplinary project teams



Designing the communication process between projects and committees

Our Success Story

Project management during the start-up phase for an automotive supplier.

Goals:

- █ Ensure reproducible production/ assembly processes
- █ Improve in-house communication
- █ Animate and motivate all employees involved
- █ Optimize the internal project management process

Steps:

- █ Analyze the assembly line and break it down into subprocesses
- █ Technical advising for process owners and inclusion of employees to increase sustained effect
- █ Consistent documentation and monitoring of optimization measures
- █ Increased transparency through optimized regular communication

Results:

- █ Requested quantity realized
- █ Quality level achieved and confirmed through audits
- █ Compliance with production start and safeguarding of the supply chain
- █ Optimization of communication between production and development through introduction of an escalation model

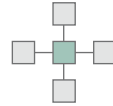


Step-by-step planning: MBtech wins over customers with our planning and implementation expertise.



Goals

Definition of hard and soft goals, in line with the expectations of the most important stakeholders.



Project environment/ stakeholders

Consideration and assessment of all factors influencing the project.



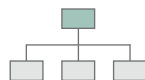
Phase planning/ milestones

Overview of the project as a whole; definition of interim targets.



Organization

Design of project organization and adjustment of the organization to specific performance, scheduling, and cost targets.



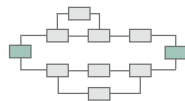
Risk analysis

Looking ahead to identify and assess potential events and situations.



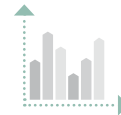
Lasting influence on the entire project cycle:

At MBtech, ongoing progress monitoring is a matter of course. The steady influence that soft skills exert on the progress of the project must be kept in mind at all times.



Network plan

Processes are considered according to how they fit together in terms of content and scheduling.

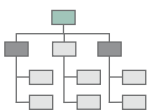


Resource planning

Determination of personnel, equipment, and material requirements according to timeline and availability.

Project structure plan (PSP)

Division of the project into specific sub-tasks that can be planned and monitored.



Schedule

Precise timeline and workflow planning through individual steps, sequences, and specific calendar dates.



Cost planning

Cost estimates, by amount and structure, per workflow. Also budgeting by schedule and materials.





www.mbtech-group.com

vehicle engineering

powertrain solutions

electronics solutions

consulting

Management Consulting
Technology & Innovation Consulting
Process Consulting
Program & Project Consulting
Business Academy

Europe

MBtech Consulting GmbH
Posener Straße 1
71065 Sindelfingen
Germany
Tel. +49 7031 686-4780
Fax +49 7031 686-4644
info@mbtech-group.com

North America

MB-technology NA LLC
400 E. Big Beaver Rd., Suite 300
Troy, MI 48083
USA
Tel. +1 248 312-0277
Fax +1 248 312-0279
info@mbtech-group-na.com

Asia

MB SIM Technology Co., Ltd.
6F Bldg. DOHO, No. 2452 Wanhangu Rd.
Shanghai 200051
P.R. China
Tel. +86 21 6192-2200
Fax +86 21 6192-2202
info-mbsimtech@mbtech-group.com